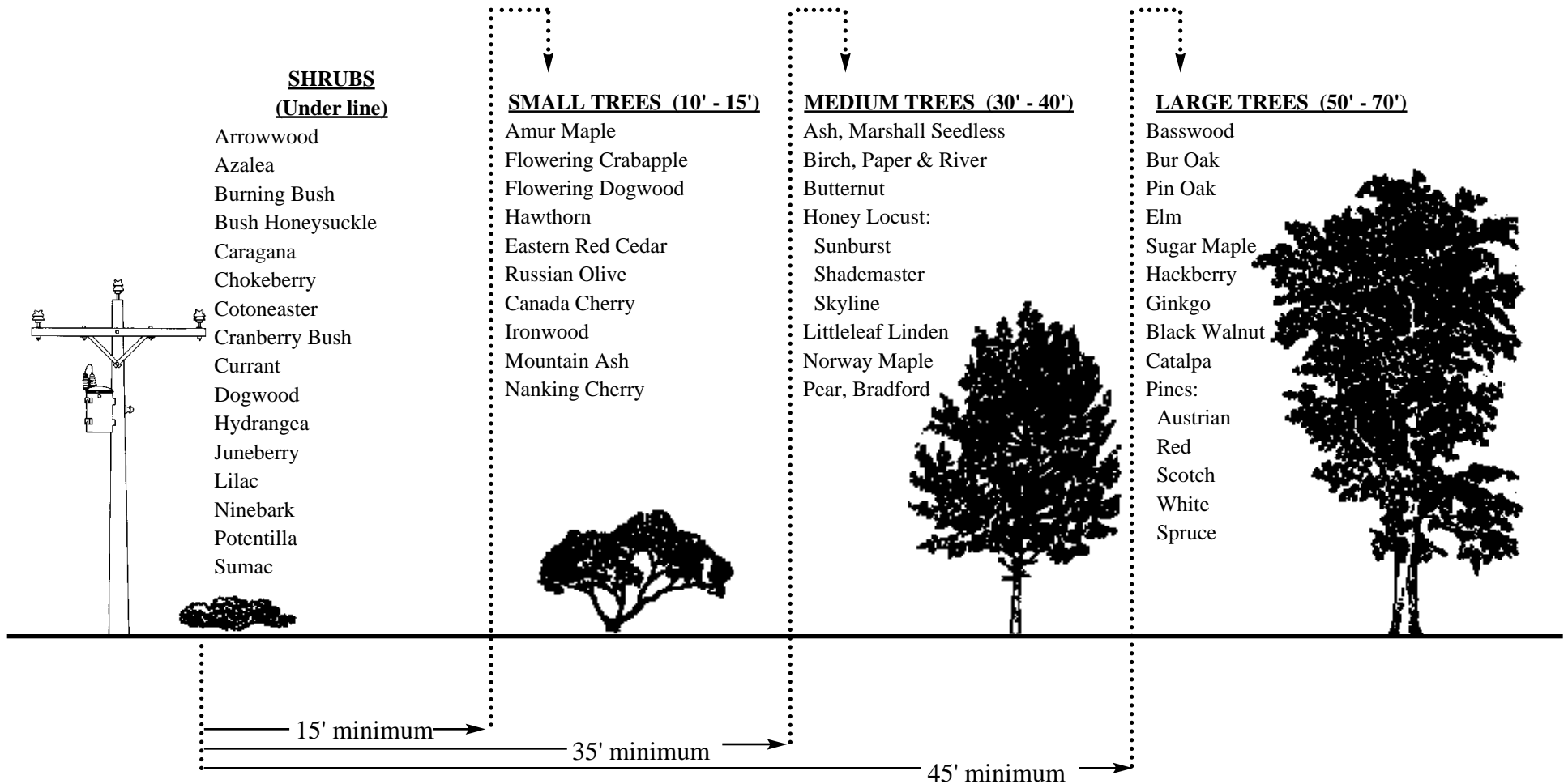


TREE VARIETIES FOR PLANTING NEAR OVERHEAD POWER LINES



Minimum clearance for shrubbery or trees planted near any URD (Underground) power cable is **10' on either side of the cable route.**

TEC reminds homeowners to call 811 before all digging projects to have the approximate location of underground utility lines marked and to reduce the risk of injury and utility damage. When homeowners call 811, Minnesota residents are connected to Gopher State One Call, and Iowa residents are connected to Iowa One-Call. The call center will then notify the appropriate utility company of the intent to dig. Professional locators are sent to the requested digging site to mark the approximate locations of underground lines with flags or spray paint.